

**PROFESSOR OR
MATERNAL AND
CHILD HEALTH**





CONTENTS

Message from the Vice Chancellor	3	Research and Innovation Plan	10
Fast facts	4	Organisational chart	11
Our campuses	5	Griffith Health	12
Griffith University – vision, mission, values and commitments	6	The Role	14
First Peoples	7	Key Accountabilities	15
Our future	8	Selection Criteria	16
Academic Plan	9	Process and Timeline	17

MESSAGE FROM THE VICE CHANCELLOR

At Griffith, we celebrate, believe in and strive for the remarkable.

Established in 1971, Griffith is a relatively young university. In just four decades, we've grown from one campus and 451 students to become a comprehensive, multi-campus institution, with 50,000 students and over 200,000 graduates. Today, we are known for our high-impact research, outstanding student experience, commitment to social justice and welcoming environment, and rank among the top two per cent of universities worldwide*. Our remarkable growth and development is underpinned by our commitment to make material contributions to our local, national and international communities.

Griffith was created to be a different kind of university, and we know that success often comes from being an exception to the norm—challenging convention, adapting and innovating, creating bold new trends and pioneering solutions ahead of their time. Being a young university means we have the freedom to respect tradition without being restricted by it, which gives us the flexibility to adapt to the ever-changing needs of students, industry and the community.

Since we started teaching, we've been deeply connected to the Asian region, socially conscious and environmentally aware. We've never lost sight of our progressive beginnings and everything we do—from education to research and community engagement—is designed to not only meet, but improve the new world our students, graduates and communities will encounter.

remarkablegriffith.com.au

We believe in the potential for all people to be remarkable—to be courageous, to capture opportunity, to make a difference and change the future forever.

Our vision is to engage in remarkable scholarship and research that contributes significantly to society.



Professor Ian O'Connor
Vice Chancellor and President





Ranked in the
TOP 2% ◀ ▶
*of universities worldwide**

4,000+ ◀ ▶
staff

50,000+ ◀ ▶
students

200,000+ ◀ ▶
graduates

WGEA
employer of choice
for gender equality

200+ ▶ ◀
degrees

5 ▶ ◀
campuses

1 ▶ ◀
digital campus

OUR CAMPUSES

Our six campuses are a thriving network of learning and innovation. Our South East Queensland campuses are located on the Gold Coast, in Brisbane, and in Logan. Our Digital campus is located at your fingertips and spans the globe. Students have access to diverse study options and unique learning opportunities, leading to exceptional outcomes upon graduation.



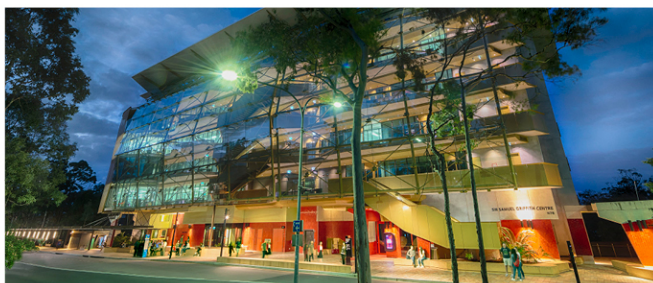
Digital

Griffith is one of Australia's leading providers of online education and a founding member of Open Universities Australia. Our digital campus is now our third-largest and fastest growing, offering a range of Massive Open Online Courses (MOOCs) and 91 undergraduate and postgraduate degree programs.



Gold Coast

Located just minutes from world-famous beaches, the Gold Coast offers teaching and research across nearly all disciplines and professions, supported by a range of state-of-the-art facilities. The campus has seen significant growth and development with the opening of the multi-million dollar Griffith Health Centre in 2013 and the launch of the Griffith Business School building in 2014.



Nathan

Nathan, our foundation campus, is situated in tranquil, native bushland on the edge of Toohy Forest. It offers degrees across a range of disciplines and is home to world-class expertise in the environment, corporate sustainability, Asian studies, the emerging biosciences, and nursing and midwifery. Currently extending its teaching of allied health professions.



South Bank

Located in Brisbane's cultural heart, the South Bank campus is renowned for excellence in the creative and performing arts. The campus encompasses the Queensland College of Art, Queensland Conservatorium, Griffith Film School and Griffith Graduate Centre.



Mt Gravatt

Adjacent to Nathan campus with panoramic views to Brisbane, our Mt Gravatt campus is also situated on the edge of the Toohy Forest. This campus is a leader in its focus on crime prevention and intervention and is the base for our social sciences and humanities teaching and research.



Logan

Our community-focused campus is recognised as a national showcase of social inclusion in higher education through innovative partnerships, industry engagement and degree pathways. It is a leader in flexible learning options and has strong connections with the local community.

GRIFFITH UNIVERSITY

Vision

Our vision is to be one of the most influential universities in Australia and the Asia-Pacific region.

Mission

The mission of Griffith University is to engage in outstanding scholarship that makes a major contribution to society and to produce ground breaking research. Students will be provided with an excellent education and the capacity to develop and apply knowledge to exercise influence and make meaningful life-long contributions to their communities.

Values and commitments

In pursuit of our vision and mission the University is committed to:

- Rigorous standards of scholarship
- Positively influencing our communities through our teaching, research and engagement activities
- Engaging students as partners in their education
- Recognising our location in the Asia-Pacific and deepening our engagement with the region
- Bringing disciplines together to address the key issues of our time
- Promoting the respect of individual rights and ethical standards
- Participatory decision-making and problem solving
- Contributing to a robust, equitable and environmentally sustainable society
- Recognising and valuing diversity
- Recognising the unique place of First Peoples in Australian history and culture, and enabling and celebrating their continued contributions to the nation.

griffith.edu.au/about-griffith/vision-and-values



Professor Emeritus
Alan Mackay-Sim
2017 Australian of the Year

FIRST PEOPLES

We provide a culturally safe environment for our students, staff and communities through recognition of our First Peoples—Aboriginal and Torres Strait Islanders—and the promotion of reconciliation, respect, education and engagement.

Griffith has the largest Indigenous student population of any Queensland university, and one of the largest Aboriginal and Torres Strait Islander academic staff cohorts in Australia.

Through our work with Indigenous Elders, we continue to develop Aboriginal and Torres Strait Islander engagement strategies and partnerships for community empowerment, as well as a curriculum informed by respect for the knowledge systems of our first peoples.

Our Indigenous research development also aims to further the aspirations of Aboriginal and Torres Strait Islander communities.

Acknowledgement of Country

Griffith University acknowledges the people who are the traditional custodians of the land, pays respect to the Elders, past and present, and extends that respect to other Aboriginal and Torres Strait Islander peoples.

**[griffith.edu.au/
about-griffith/first-peoples](http://griffith.edu.au/about-griffith/first-peoples)**



Walk and Talk
Staff, students, alumni and community partners take part in the annual event held to encourage reconciliation and mark National Sorry Day

OUR FUTURE

The Strategic Plan 2018–2019 gives expression to the Griffith 2020 agenda and to the vision to further develop Griffith as a university of influence.

The Strategic Plan sets out five overarching goals to guide future activity:

- To provide an excellent educational experience to attract and retain students who, regardless of their background, will succeed at university and become graduates of influence.
- To continuously improve our research performance and, through our research, deliver social dividends.
- To attract and retain excellent staff who, through their teaching, research, professional support and engagement, will positively contribute to Griffith's development as a university of influence.
- To be a sustainable university.
- To enhance our engagement with the Asia–Pacific region and to consolidate our reputation as one of Australia's most Asian–engaged universities.

The Griffith 2020 strategy is characterised by:

- Placing students at the centre of our educational activities to ensure that our programs, processes and campuses are responsive to student needs.
- Delivering an excellent educational experience that allows our students to develop their potential and become influential graduates.
- Broadening and deepening our research areas of international excellence and achieving benchmarked performance and impact in these areas.
- Continuing to focus and grow our campuses.
- Deepening our engagement with the Asia–Pacific region.

griffith.edu.au/office-vice-chancellor/strategic-plan



ACADEMIC PLAN

Engaged and relevant

The University is committed to enhancing student employability through industry-engaged programs that are relevant to students' future career ambitions.

Increasingly, a significant proportion of students aspire to be entrepreneurs, and are looking to a university education to give them the skills to be self-employed innovators. Others will require enterprise skills to address the challenges and opportunities significantly disrupting professional workplaces.

Griffith is responding to this imperative through a series of initiatives which will place us at the forefront of the innovation agenda. The majority of undergraduate students will be able to undertake either an elective or a major that will give them the skills to be innovative entrepreneurs.

Quality

Griffith has undertaken a comprehensive review of all of its undergraduate programs and has identified opportunities to extend the suite of professional programs at Nathan, increase double degree offerings and redesign programs to include a common foundation year.

Through ongoing market and brand research, we will continue to review our program suite, and will introduce outstanding new programs and double degrees that reflect the rapidly changing external environment, and student and industry demand.

Griffith will position itself as a leader in innovative pedagogies that enrich and personalise the student experience.

griffith.edu.au/about-griffith/governance/plans-publications/academic-plan

Student-centred

We will offer student-centred academic programs that are responsive to student needs and expectations, with flexible study options, and support and advice available to all students, anywhere and at any time, assisting them to stay at university and successfully complete their studies.

The introduction of trimesters in 2017 has allowed Griffith to respond to student demand for greater flexibility in how and when they undertake their studies.

We will increase the number of postgraduate programs that are structured as a series of self-contained modules (micro-credentials) that can be accumulated into a full degree. Many of these will be offered flexibly in the Cloud, and with industry partners.

Griffith is experiencing a very rapid uptake of programs that are offered online—our virtual campus is currently our third largest campus. We will continue to expand the number and range of online offerings and will continuously improve the quality of online courses.

We will continue our initiatives to enhance student advisory and support services, with the aim to provide a greater range of high quality online resources for students, available 24/7.

Associate Professor
Brydie-Leigh Bartleet
Australian University
Teacher of the Year 2014



RESEARCH AND INNOVATION PLAN

Over the past decade Griffith has developed a reputation as one of Australia's leading comprehensive research universities, with strengths ranging from the creative arts, social sciences and humanities through to the physical and natural sciences, engineering and IT, health and medicine.

The over-riding vision of the Research and Innovation Plan 2017–2020 is for Griffith to fit the profile of a leading (top 300) research university in all aspects by 2020. The Plan sets minimum expectations for higher degree by research education, research publication quality and volume, research income and the performance standards that we expect from staff.

Our research centres and institutes provide a robust framework for focused research, while our commitment of \$60 million (since 2009) to 12 Areas of Strategic Investment underpins aspirations for world-leading research outcomes. In 2015, the University launched a Griffith 2020 research program of \$20 million in support of 'step change' projects. That investment has targeted: key senior appointments directed at securing research leadership succession; internationalisation of key research themes; and positioning the University more explicitly in support of innovative research–industry partnerships.

Professor Michael Good (right)
Institute for Glycomics,
Principal Research Leader

The results of these successive strategies is apparent, with growth in external research income from \$62.3 million in 2013 to \$78.1 million in 2016, with between 50–60% of that income sourced from industry and other end-users. A sustained program of investment in Higher Degree by Research (HDR) scholarships has lifted the HDR student load from 1270 in 2012 to 1612 in 2016. Over this period, annual HDR completions increased from 185 in 2012, to 354 in 2016.

Excellence in Research for Australia

In the most recent national evaluation of research performance, Excellence in Research for Australia (ERA) 2015, Griffith was awarded the highest rating 'well above world standard' in 10 specific fields of research and 'above world standard' in another 23 specific fields. Approximately 98% of our research output was contained in the 54 fields of research rated 'world standard' or above, placing Griffith 9th in Australia for the breadth and excellence of our research.

Rankings performance

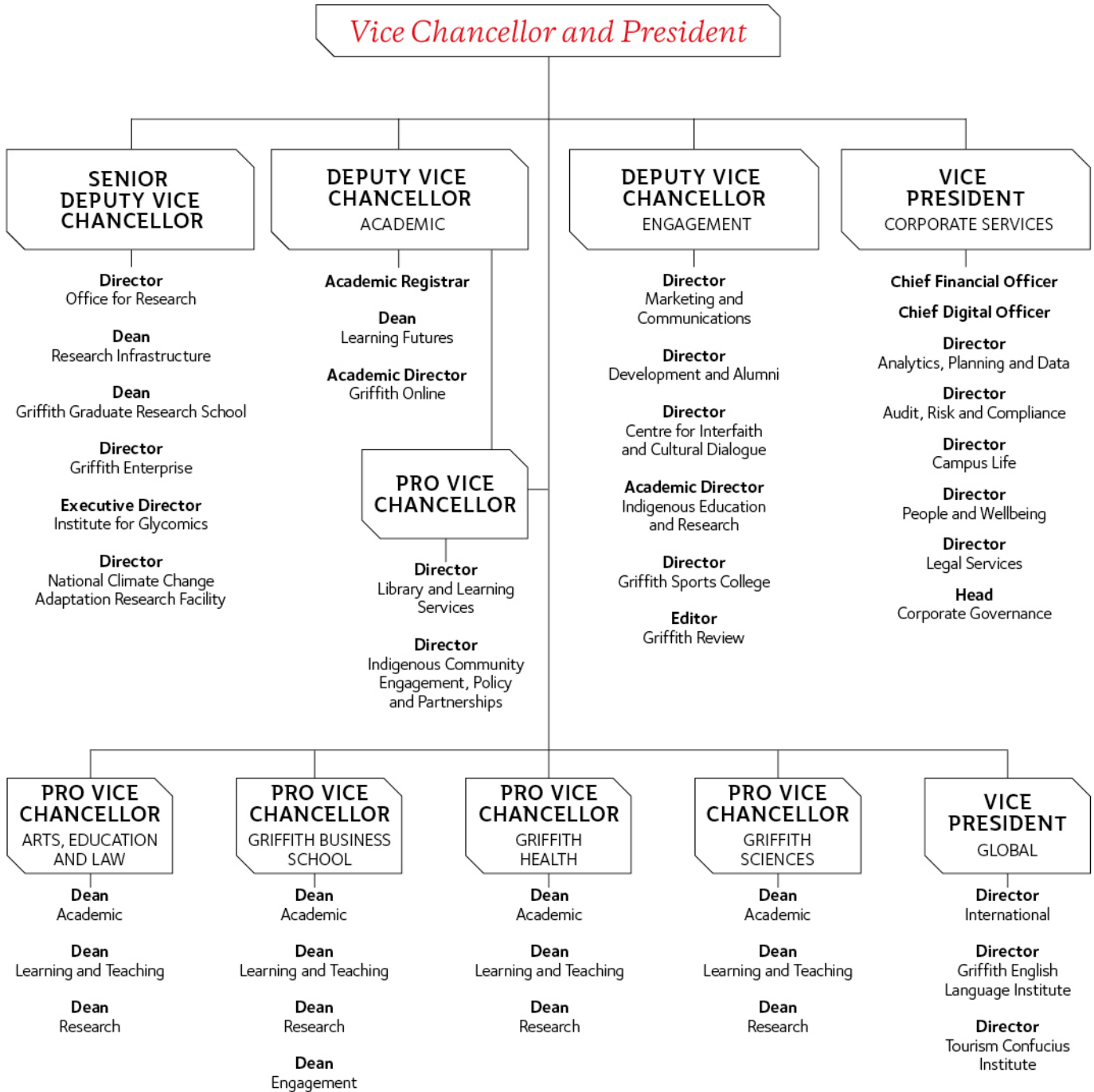
Griffith now appears in the top 300 on the Times HE World University Rankings and the U.S. News Best Global Universities. Griffith also ranks highly as a young university, placing 32nd in the QS Top 100 under 50 rankings and 35th in the Times HE Top 200 under 50.

In the ShanghaiRanking Global Ranking of Academic Subjects, Griffith was ranked in 30 subjects, with four of these listed in the top 50: Hospitality & Tourism Management ranked 2nd, Nursing at 14th, Marine/Ocean Engineering at 28th, and Law at 38th. The consistency of these outcomes for Griffith (9th in Australia and 2nd in Queensland) supports Griffith's positioning as one of Australia's leading comprehensive research and teaching universities.

griffith.edu.au/about-griffith/governance/plans-publications/griffith-research-and-innovation-plan



ORGANISATIONAL CHART



GRIFFITH HEALTH

We have four academic groups that drive our degrees and uphold our remarkable standards of education. Each of these groups comprises a range of schools, and offers undergraduate and postgraduate degrees in a spectrum of subjects and disciplines. Many of our research centres and institutes align with these groups, offering cutting-edge research that informs our teaching.

Griffith Health provides students with the latest in research and evidence-based teaching methods in state-of-the-art facilities to help develop their skills in an applied setting. Through leadership and innovation in teaching, research and community engagement, Griffith Health aims to create sustained improvement in health and healthcare for local, national and international communities.

Schools

- School of Allied Health Sciences
- School of Applied Psychology
- School of Dentistry and Oral Health
- School of Human Services and Social Work
- School of Medical Science
- School of Medicine
- School of Nursing and Midwifery
- School of Pharmacy and Pharmacology



GRIFFITH HEALTH

With over 10,000 students and more than 500 academic staff, Griffith Health is one of the largest and most diverse single academic Health faculties in the Australian University sector.

The Vision

To create sustained improvements in health and health care for local, national, and international communities through leadership and innovation in teaching, research, and community engagement – “promoting health and enabling communities”.

Strategic Priorities

Strategic Priorities include:

- Maximising research performance;
- Encouraging cross-disciplinary linkages and innovation in teaching and research;
- Enhancing academic programs;
- Engaging with communities; and
- Delivering high quality, student centred education through professionally relevant programs.

Learning and Teaching

The Group is committed to the pursuit of learning and teaching excellence in line with the philosophy of meeting the educational needs and aspirations of our constituent communities through provision of high quality programs. Griffith Health aims to transform the student experience, whilst paying particular attention to the quality of teaching, and to academic standards. We also recognise that our students come from diverse backgrounds and provide them with the support they need in order to succeed, we strive to offer an innovative learning and teaching culture through strategies that support staff to be student-centred, evidence based, collaborative and professionally accountable in their practice, and that positively recognise and reward their achievements and contributions.

Research

The research strategy for the Health Group is built upon the premise that our future is dependent on research that is firmly embedded in and conducted in partnership with communities that deliver healthcare services.

Our Vision: Improve health and wellbeing through globally significant research and community engagement.

Our Mission: Embed research in communities that deliver services to improve health outcomes and wellbeing, thereby enabling researchers to conduct globally significant research and drive measurable improvements in health and wellbeing.

THE ROLE

Position title	Professor of Maternal and Child Health
Position level	Professor Level E
Salary scale	\$175,772 per annum + 17% superannuation
Section	School of Nursing and Midwifery / Women's, Children's and Newborn Services
Group	Griffith Health / Gold Coast Hospital and Health Service
Supervisory responsibilities	Academic and research staff, higher degree students
Location of work	Gold Coast
Employment type	Full Time, Fixed Term (5 years)

The Professor of Maternal and Child Health is a joint initiative between Griffith University and the Gold Coast Hospital & Health Service (GCHHS). The Professor of Maternal and Child Health will provide leadership in the critical examination of current trends and evidence-based practice in maternal, newborn and children's care, and related implications for research, education and practice. A key focus for this role will translating research into practice / practice development.

The Professor of Maternal and Child Health is responsible for the advancement of clinical practice, education and research at the GCHHS by:

- Conducting externally funded clinical maternal, newborn and children's research projects,
- Promoting the development of evidence-based knowledge and practices by conducting research and leading the implementation of research to practice/ practice development,
- Contributing towards the achievement of the strategic goals of both Griffith University and the GCHHS,
- Maintaining credible practice skills and ability within the multidisciplinary clinical team and health care environment.

This position is a member of both the School of Nursing and Midwifery within the Health Group at Griffith University and the GCHHS. The Professor of Maternal and Child Health will work closely with midwifery academic team at Griffith University, the other joint appointments and associated Research Assistants at GCHHS and other researchers at GCHHS.

KEY ACCOUNTABILITIES

- Provide a functional link between Griffith University and the GCHSD to undertake research relevant to midwifery practice and models of maternity service delivery.
- Initiate and conduct research in maternity, newborn and children's health which is nationally and internationally competitive and of value to the GCHSD and Griffith University.
- Provide academic leadership in research and scholarship, and develop research skills for staff of the GCHSD and Griffith Health.
- Support a culture of collaborative research between the GCHSD and Griffith University, fostering productive and innovative links between clinicians, academics, and supervision of research students.
- Attract research and consultancy funds.
- Provide advice and guidance surrounding the implementation of evidence-based practice in maternity care and children's health.
- Maintain a strong clinical presence and influence in the practice setting.
- Provide supervision of honours and research higher degree students.
- Contribute significantly to Griffith University's research performance as reported to DEST via refereed research publications, competitive research grants and research higher degree completions by University students.
- Conduct teaching at Griffith University within areas of expertise.
- Effectively manage designated budget and other funds.
- Disseminate research findings via staff education sessions, conferences and peer-reviewed publications.
- Lead and support compliance with relevant legislation and University policies and procedures, including equity and health & safety and exhibit good practice in relation to same.
- Lead and support fair, ethical and professional work practices in accordance with the University Code of Conduct.



SELECTION CRITERIA

- A doctoral qualification in maternal, newborn or children's health related discipline.
- Eligibility for registration as a midwife in Australia with the Australian Health Practitioner Regulation Agency.
- Demonstrated expertise in contemporary midwifery practice.
- Demonstrated knowledge, skills and leadership in teaching and curriculum / program development at the tertiary education level, and a proven ability in the administration of University courses and programs.
- Demonstrated capacity to supervise fourth year and postgraduate research students to completion.
- Outstanding contribution and publication of quality research, with evidence of high quality papers and national and international impact of research.
- Proven success in attracting internal and external research grant funding together with the ability to contribute to an area of research strength in the School.
- Demonstrated effective communication and interpersonal skills and the demonstrated ability and commitment to work in a collegial manner and contribute to the positive culture and aspirations of the School and University including collaborating with other staff, participation on committees, contributing to the marketing of school programs, and liaison with industry partners.
- Demonstrated experience in academic leadership in relation to teaching, research and scholarship, with a strong record of mentoring other staff, especially early career researchers.
- Provide research leadership within the School, particularly in grants, building linkages with the profession and building the Higher Degree Research student cohort.
- Strong track record of collaborating with industry and community groups and the ability to develop these networks at national and international levels.



PROCESS AND TIMELINE

Griffith University is proud to be recognised by the Workplace Gender Equality Agency as an Employer of Choice for Gender Equality.

Griffith University is being assisted by CCentric Group for the appointment of this role.

To learn more about this position and to apply, please contact Pam Lubrainschik at Ccentric Group.

Confidential Enquiries

Confidential enquiries should be made to:
Pam Lubrainschik
0452 295 088
paml@ccentricgroup.com

Applications

Your application should include:

- Full name, address, mobile and telephone number(s) and email address
- Nationality and citizenship
- A full curriculum vitae
- A statement addressing selection criteria (as outlined above)
- Names and contact details of at least three potential referees (no contact will be made without your permission)

Applications can be sent to Pam Lubrainschik at paml@ccentricgroup.com

Please note that applications close at 4.30pm on Friday 4 January 2019.

Date of commencement

Please provide an indication of the earliest date on which you would be able to commence.



Sir Samuel Griffith Centre, Nathan campus



CRICOS No. 00233E


Griffith
UNIVERSITY
Queensland, Australia

griffith.edu.au

©2018 Griffith University